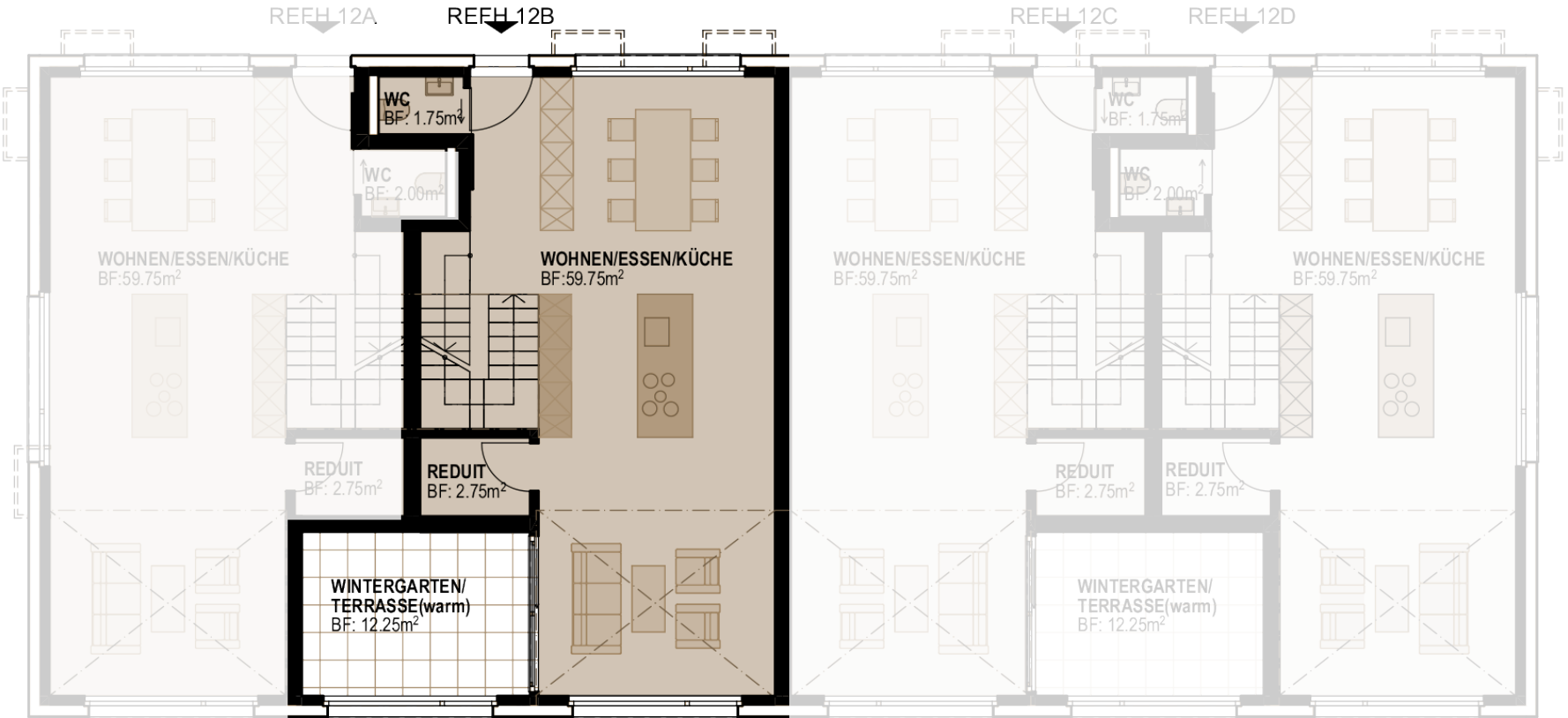


# PARZELLENFLÄCHEN



- = REFH 10A  
314.00m<sup>2</sup>
- = REFH 10B  
154.00m<sup>2</sup>
- = REFH 10C  
262.00m<sup>2</sup>
- = REFH 12A  
258.00m<sup>2</sup>
- = REFH 12B  
158.00m<sup>2</sup>
- = REFH 12C  
158.00m<sup>2</sup>
- = REFH 12D  
220.00m<sup>2</sup>

# HAUS 12B | 6 ½ - ZIMMER REIHENMITTELHAUS | ERDGESCHOSS



# HAUS 12B | 6 ½ - ZIMMER REIHENMITTELHAUS | OBERGESCHOSS



# HAUS 12B | 6 ½ - ZIMMER REIHENMITTELHAUS | DACHGESCHOSS

